

# DUTY MASTER ALTERNATING CURRENT MOTORS

SQUIRREL-CAGE INDUCTION  
ENCLOSURE: TOTALLY ENCLOSED

SUBMERSIBLE

619738-007

D

D

C

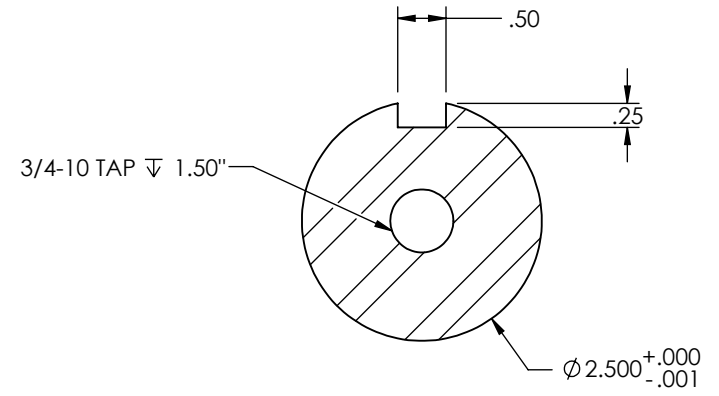
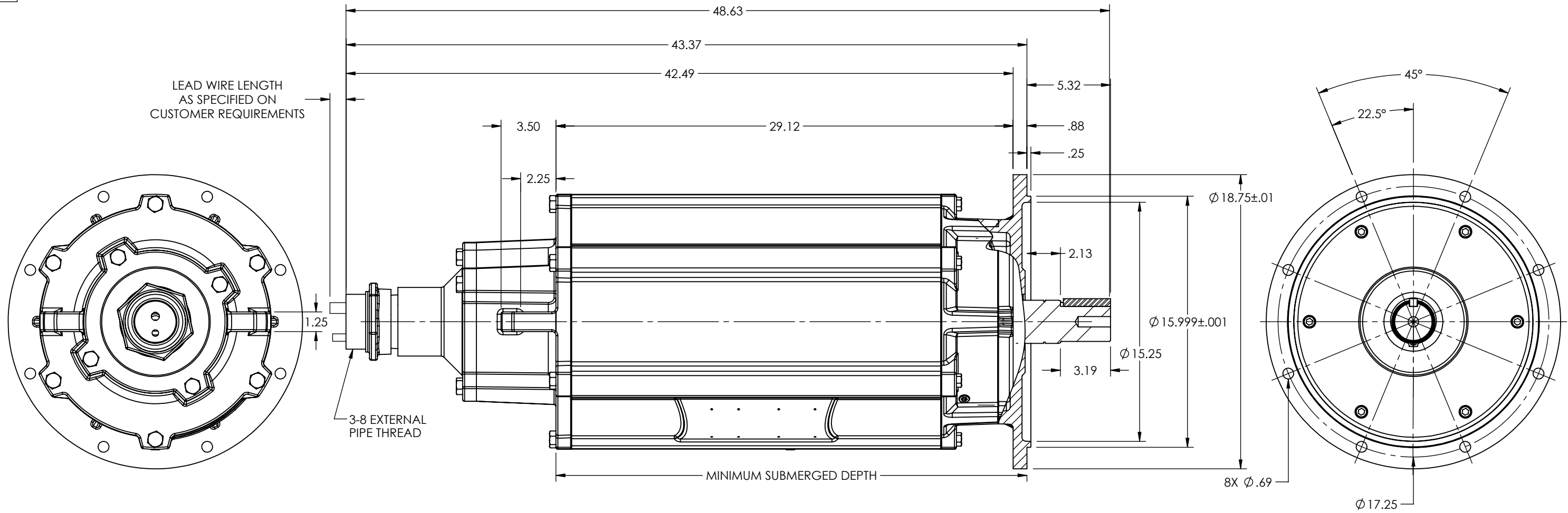
C

B

B

A

A



NOTES:

1. FACE RUNOUT AND ECCENTRICITY .008 MAX T.I.R.
2. PROTECTIVE CONDUIT FURNISHED BY CUSTOMER
3. WEIGHT (LBS): 1150 +/- 15%

CUSTOMER IS RESPONSIBLE FOR DETERMINING THAT BALDOR'S PRODUCT WILL PERFORM SUITABLY IN THE INTENDED APPLICATION

REV. DESC: ORRECT ENDPLATE DIMENSIONS			
REV: C	VERSION: 03	REVISED: 11:45:38 09/16/2021	TDR: 000001177617
MODEL NO. 619738-007			REF: -
BY: RGGJAO			<b>B</b>

**BALDOR**

DIM SHT 320TY SUBMERSIBLE

619738-007